

IMPROVEMENT & TOPOGRAPHIC SURVEY

CHAMONIX AT WOODRUN CONDOMINIUMS
SECTION 1, TOWNSHIP 10 SOUTH, RANGE 86 WEST OF THE 6TH PM
TOWN OF SNOWMASS VILLAGE, COUNTY OF PITKIN, STATE OF COLORADO

TREE	TYPE	SIZE	DRIP
1	CONIFEROUS	6"	8"
2	CONIFEROUS	8"	14"
3	CONIFEROUS	8"	14"
4	ASPEN MULTI	7"	12"
5	ASPEN	7"	12"
6	ASPEN	11"	5"
7	ASPEN	7"	12"
8	CONIFEROUS	6"	10"
9	CONIFEROUS	6"	10"
10	CONIFEROUS	8"	14"
11	CONIFEROUS	7"	12"
12	ASPEN MULTI	6"	10"
13	CONIFEROUS	6"	10"
14	ASPEN	8"	14"
15	ASPEN	6"	10"
16	CONIFEROUS	7"	12"
17	ASPEN	7"	12"
18	ASPEN	10"	15"
19	CONIFEROUS	6"	10"
20	CONIFEROUS	5"	8"
21	ASPEN	5"	8"
22	CONIFEROUS	6"	10"
23	ASPEN	7"	12"
24	ASPEN MULTI	7"	12"
25	CONIFEROUS	6"	10"
26	ASPEN	10"	15"
27	ASPEN	6"	10"
28	ASPEN	8"	14"
29	CONIFEROUS	11"	18"
30	ASPEN	8"	14"
31	ASPEN	12"	20"
32	ASPEN	11"	18"
33	ASPEN	10"	16"
34	ASPEN	10"	16"
35	ASPEN	11"	18"
36	ASPEN	7"	12"
37	ASPEN	7"	12"
38	CONIFEROUS	10"	16"
39	ASPEN	7"	12"
40	ASPEN	7"	12"
41	ASPEN	7"	12"
42	ASPEN	6"	10"
43	ASPEN MULTI	8"	14"
44	ASPEN	6"	10"
45	ASPEN	12"	15"
46	ASPEN	12"	15"
47	ASPEN MULTI	10"	16"
48	ASPEN	10"	16"
49	ASPEN	10"	16"
50	ASPEN	10"	16"
51	ASPEN	10"	16"
52	ASPEN	6"	10"
53	ASPEN	10"	16"
54	ASPEN	8"	14"
55	ASPEN	7"	12"
56	ASPEN	7"	12"
57	ASPEN	7"	12"
58	CONIFEROUS	7"	12"
59	CONIFEROUS	7"	12"
60	CONIFEROUS	7"	12"
61	CONIFEROUS	6"	10"
62	ASPEN MULTI	8"	14"
63	CONIFEROUS	7"	12"
64	CONIFEROUS	7"	12"
65	CONIFEROUS	8"	14"
66	CONIFEROUS	10"	16"
67	ASPEN	6"	10"
68	ASPEN	5"	8"
69	CONIFEROUS	7"	12"
70	CONIFEROUS	11"	18"
71	ASPEN	5"	8"
72	ASPEN	5"	8"

TREE	TYPE	SIZE	DRIP
73	ASPEN	5"	8"
74	CONIFEROUS	11"	18"
75	ASPEN	6"	10"
76	ASPEN	6"	10"
77	CONIFEROUS	6"	10"
78	ASPEN	5"	8"
79	ASPEN	6"	10"
80	ASPEN	6"	10"
81	ASPEN	6"	10"
82	ASPEN	6"	10"
83	ASPEN	6"	10"
84	ASPEN	6"	10"
85	ASPEN	6"	10"
86	ASPEN	5"	10"
87	ASPEN	6"	10"
88	ASPEN	5"	8"
89	ASPEN MULTI	6"	10"
90	ASPEN	11"	18"
91	ASPEN	10"	16"
92	ASPEN	6"	10"
93	ASPEN	6"	10"
94	ASPEN	6"	10"
95	ASPEN	6"	10"
96	ASPEN	12"	20"
97	ASPEN MULTI	11"	18"
98	ASPEN MULTI	10"	16"
99	ASPEN	10"	16"
100	ASPEN	6"	10"
101	ASPEN	6"	10"
102	ASPEN	5"	8"
103	CONIFEROUS	6"	10"
104	CONIFEROUS	6"	10"
105	CONIFEROUS	10"	16"
106	CONIFEROUS	6"	10"
107	ASPEN	6"	10"
108	CONIFEROUS	4"	5"
109	ASPEN	7"	12"
110	ASPEN	13"	25"
111	CONIFEROUS	5"	8"
112	CONIFEROUS	10"	16"
113	ASPEN	8"	14"
114	ASPEN	8"	14"
115	ASPEN MULTI	6"	10"
116	CONIFEROUS	6"	10"
117	CONIFEROUS	11"	18"
118	CONIFEROUS	7"	12"
119	CONIFEROUS	10"	16"
120	CONIFEROUS	4"	6"
121	CONIFEROUS	6"	10"
122	CONIFEROUS	6"	10"
123	TRO A MULTI	6"	10"
124	CONIFEROUS	6"	10"
125	CONIFEROUS	6"	10"
126	CONIFEROUS	6"	10"
127	ASPEN MULTI	10"	16"
128	ASPEN MULTI	6"	10"
129	ASPEN	4"	6"
130	CONIFEROUS	4"	6"
131	CONIFEROUS	4"	6"
132	CONIFEROUS	5"	5"
133	ASPEN	4"	6"
134	ASPEN	6"	10"
135	ASPEN MULTI	6"	10"
136	ASPEN	8"	14"
137	CONIFEROUS	13"	20"
138	ASPEN	11"	18"
139	ASPEN	12"	20"
140	ASPEN	12"	20"
141	ASPEN	10"	16"
142	CONIFEROUS	6"	10"

PROPERTY ZONED:

PUD = PLANNED UNIT DEVELOPMENT

PROPERTY DESCRIPTION:

LAND TITLE GUARANTEE COMPANY COMMITMENT NO. Q62018316 DATED: JUNE 2, 2025.

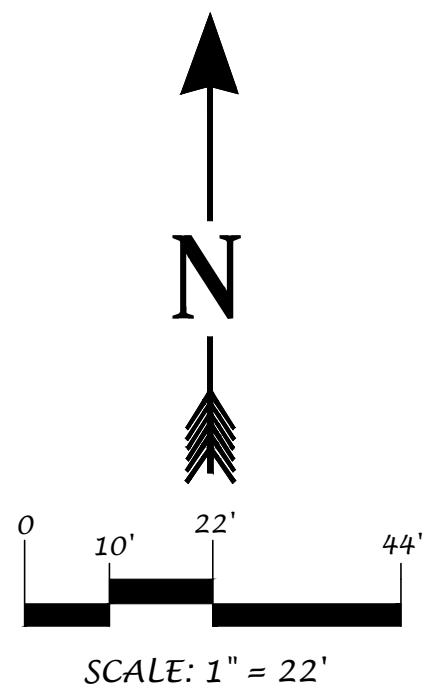
CHAMONIX AT WOODRUN CONDOMINIUMS.
ACCORDING TO THE MAP THEREOF, RECORDED FEBRUARY 8, 1985 IN PLAT BOOK 16 AT PAGE 85 AS
SUPPLEMENTED BY THE SUPPLEMENTAL CONDOMINIUM MAP RECORDED ON MAY 22, 1985 IN PLAT
BOOK 17 AT PAGE 17, AND AS FURTHER SUPPLEMENTED BY THE SECOND SUPPLEMENTAL
CONDOMINIUM MAP RECORDED AUGUST 15, 1997 IN BOOK 43 AT PAGE 39 AND THIRD SUPPLEMENTAL
CONDOMINIUM MAP UNIT 21, CHAMONIX AT WOODRUN CONDOMINIUM RECORDED JULY 2, 1999 IN
BOOK 50 AT PAGE 39 AND AS FURTHER DEFINED AND DESCRIBED IN THE CONDOMINIUM
DECLARATION FOR CHAMONIX AT WOODRUN CONDOMINIUMS RECORDED FEBRUARY 8, 1985 IN
BOOK 481 AT PAGE 109 AND SUPPLEMENTAL CONDOMINIUM DECLARATION RECORDED MAY 22, 1985
IN BOOK 486 AT PAGE 530 AS AMENDED BY CORRECTION AMENDMENT TO SUPPLEMENTAL
CONDOMINIUM DECLARATION FOR CHAMONIX AT WOODRUN CONDOMINIUMS RECORDED FEBRUARY
14, 1986 IN BOOK 505 AT PAGE 381, AND AMENDMENT TO CONDOMINIUM DECLARATION FOR
CHAMONIX AT WOODRUN CONDOMINIUMS AND QUIT CLAIM DEED REGARDING UNIT NO. 21
RECORDED JULY 2, 1999 AS RECEPTION NO. 432975.

COUNTY OF PITKIN
STATE OF COLORADO

SURVEYOR'S CERTIFICATION

I, RODNEY P. KISER, HEREBY CERTIFY TO CHAMONIX AT WOODRUN CONDOMINIUM
ASSOCIATION INC., THAT THIS IS AN 'IMPROVEMENT SURVEY PLAT' AS DEFINED BY
C.R.S.38-51-102(9) AND THAT IT IS A MONUMENTED LAND SURVEY PERFORMED UNDER MY
DIRECT SUPERVISION AND RESPONSIBLE CHARGE, SHOWING THE LOCATION OF ALL
STRUCTURES, VISIBLE UTILITIES, FENCES, HEDGES, OR WALLS SITUATED ON THE DESCRIBED
PARCEL AND WITHIN FIVE FEET OF ALL BOUNDARIES OF SUCH PARCEL, ANY CONFLICTING
BOUNDARY EVIDENCE OR VISIBLE ENCROACHMENTS, AND ALL EASEMENTS, UNDERGROUND
UTILITIES, AND TUNNELS DESCRIBED IN THE LAND TITLE GUARANTEE COMPANY COMMITMENT
FOR TITLE INSURANCE COMMITMENT NO. Q62018316 OR OTHER SOURCES AS SPECIFIED ON THE
IMPROVEMENT SURVEY PLAT. THE INFORMATION SHOWN HEREON IS TRUE AND CORRECT TO
THE BEST OF MY KNOWLEDGE AND BELIEF, HOWEVER IT IS NOT A GUARANTY OR WARRANTY,
EITHER EXPRESSED OR IMPLIED.

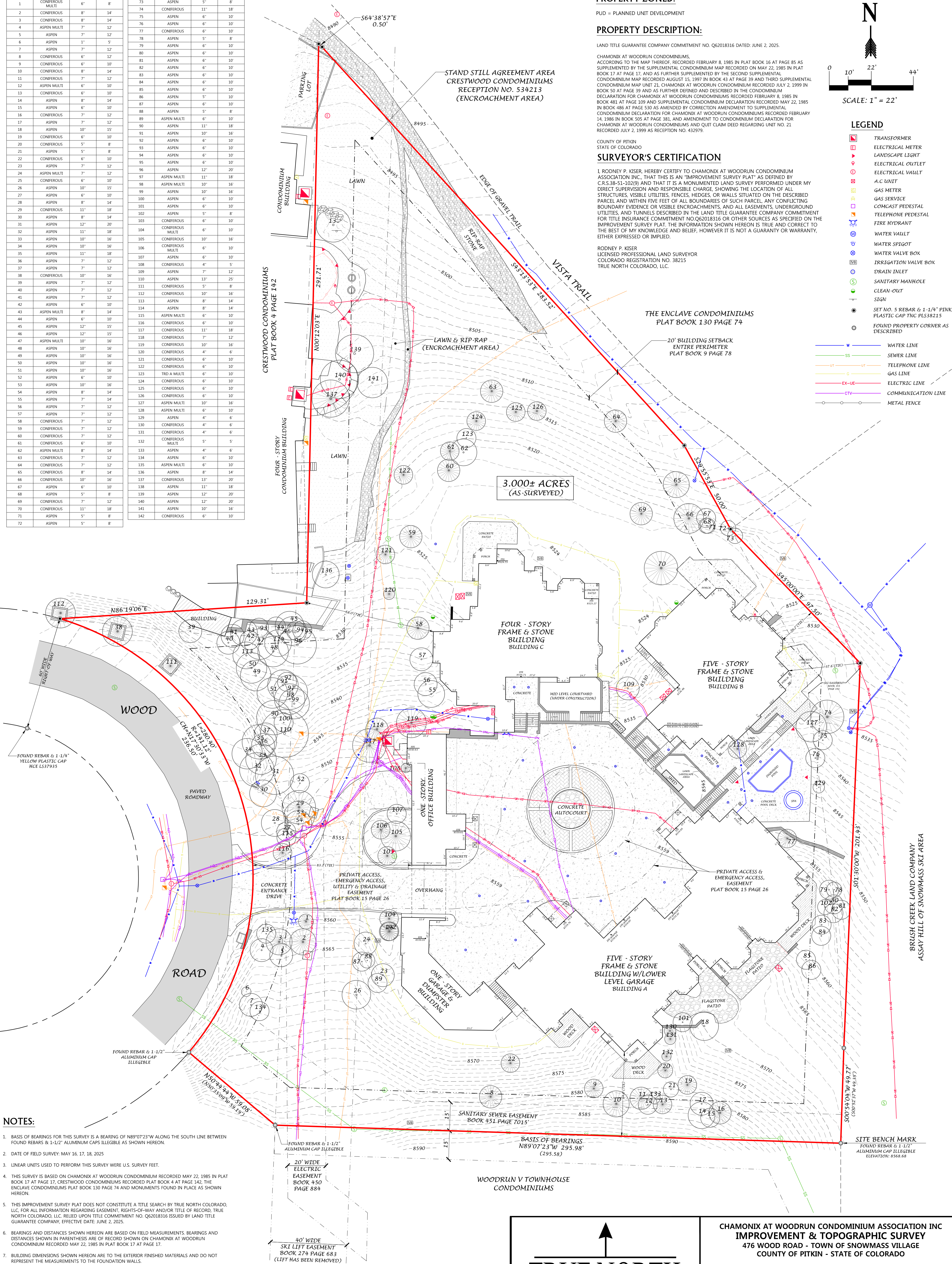
RODNEY P. KISER
LICENSED PROFESSIONAL LAND SURVEYOR
COLORADO REGISTRATION NO. 38215
TRUE NORTH COLORADO, LLC.



LEGEND

- TRANSFORMER
- ELECTRICAL METER
- LANDSCAPE LIGHT
- ELECTRICAL OUTLET
- ELECTRICAL VAULT
- A.C. UNIT
- GAS METER
- GAS SERVICE
- COMCAST PEDESTAL
- TELEPHONE PEDESTAL
- FIRE HYDRANT
- WATER VAULT
- WATER SPIGOT
- WATER VALVE BOX
- IRRIGATION VALVE BOX
- DRAIN INLET
- SANITARY MANHOLE
- CLEAN-OUT
- SIGN
- SET NO. 5 REBAR & 1-1/4" PINK PLASTIC CAP TNC PL38215
- FOUND PROPERTY CORNER AS DESCRIBED

- WATER LINE
- SEWER LINE
- TELEPHONE LINE
- GAS LINE
- ELECTRIC LINE
- COMMUNICATION LINE
- METAL FENCE



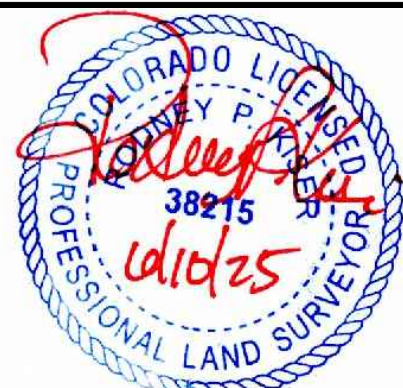
NOTES:

- BASIS OF BEARINGS FOR THIS SURVEY IS A BEARING OF N89°07'23"W ALONG THE SOUTH LINE BETWEEN FOUND REBAR & 1-1/2" ALUMINUM CAPS ILLEGIBLE AS SHOWN HEREON.
- DATE OF FIELD SURVEY: MAY 16, 17, 18, 2025
- LINEAR UNITS USED TO PERFORM THIS SURVEY WERE U.S. SURVEY FEET.
- THIS SURVEY IS BASED ON CHAMONIX AT WOODRUN CONDOMINIUM RECORDED MAY 22, 1985 IN PLAT BOOK 17 AT PAGE 17, CRESTWOOD CONDOMINIUMS RECORDED PLAT BOOK 4 AT PAGE 142, THE ENCLAVE CONDOMINIUMS PLAT BOOK 130 PAGE 74 AND MONUMENTS FOUND IN PLACE AS SHOWN HEREON.
- THIS IMPROVEMENT SURVEY PLAT DOES NOT CONSTITUTE A TITLE SEARCH BY TRUE NORTH COLORADO, LLC. FOR ALL INFORMATION REGARDING EASEMENT, RIGHTS-OF-WAY AND/OR TITLE OF RECORD, TRUE NORTH COLORADO, LLC. RELIED UPON TITLE COMMITMENT NO. Q62018316 ISSUED BY LAND TITLE GUARANTEE COMPANY, EFFECTIVE DATE: JUNE 2, 2025.
- BEARINGS AND DISTANCES SHOWN HEREON ARE BASED ON FIELD MEASUREMENTS. BEARINGS AND DISTANCES SHOWN IN PARENTHESES ARE OF RECORD SHOWN ON CHAMONIX AT WOODRUN CONDOMINIUM RECORDED MAY 22, 1985 IN PLAT BOOK 17 AT PAGE 17.
- BUILDING DIMENSIONS SHOWN HEREON ARE TO THE EXTERIOR FINISHED MATERIALS AND DO NOT REPRESENT THE MEASUREMENTS TO THE FOUNDATION WALLS.
- EASEMENT GRANTED TO COMCAST IN RECEPTION NO. 553991 AND RECEPTION NO. 623542 ARE BLANKET EASEMENTS ENCOMPASSING THE ENTIRE PROPERTY.
- ELEVATIONS SHOWN HEREON ARE BASED ON GPS FIELD OBSERVATIONS UTILIZING THE CONTINUOUS OPERATING REFERENCE STATIONS (CORS) THROUGH THE MESA COUNTY RTN NETWORK BROAD CASTING NORTH AMERICAN VERTICAL DATUM OF 1988 (NAVD88).
- CONTOUR INTERVAL EQUALS 1 FOOT.
- UNDERGROUND UTILITIES SHOWN HEREON WERE LOCATED BY ROARING FORK UTILITY LOCATORS LLC AND ARE FOR PLANNING PURPOSES ONLY. PLEASE CALL 811 PRIOR TO ANY DIGGING OR EARTHWORK CONSTRUCTION FOR UTILITY VERIFICATION.

NOTICE: ACCORDING TO COLORADO LAW YOU MUST COMMENCE ANY LEGAL ACTION BASED UPON ANY DEFECT IN THIS SURVEY WITHIN THREE YEARS AFTER YOU FIRST DISCOVER SUCH DEFECT. IN NO EVENT MAY ANY ACTION BASED UPON ANY DEFECT IN THIS SURVEY BE COMMENCED MORE THAN TEN YEARS FROM THE DATE OF CERTIFICATION SHOWN HEREON.

TRUE NORTH
COLORADO
A LAND SURVEYING AND MAPPING COMPANY

CHAMONIX AT WOODRUN CONDOMINIUM ASSOCIATION INC
IMPROVEMENT & TOPOGRAPHIC SURVEY
476 WOOD ROAD - TOWN OF SNOWMASS VILLAGE
COUNTY OF PITKIN - STATE OF COLORADO



TRUE NORTH COLORADO LLC.
A LAND SURVEYING AND MAPPING COMPANY
P.O. BOX 614 - 386 MAIN STREET UNIT 3
NEW CASTLE, COLORADO 81647
(970) 984-0474
www.truenorthcolorado.com

PROJECT NO: 2025-158
DATE: JUNE 10, 2025
DRAWN: RPK-DJB
SURVEYED: DJB-CPC
SHEET: 1 OF 1